

Magic Pillowcase

by Connecting Threads

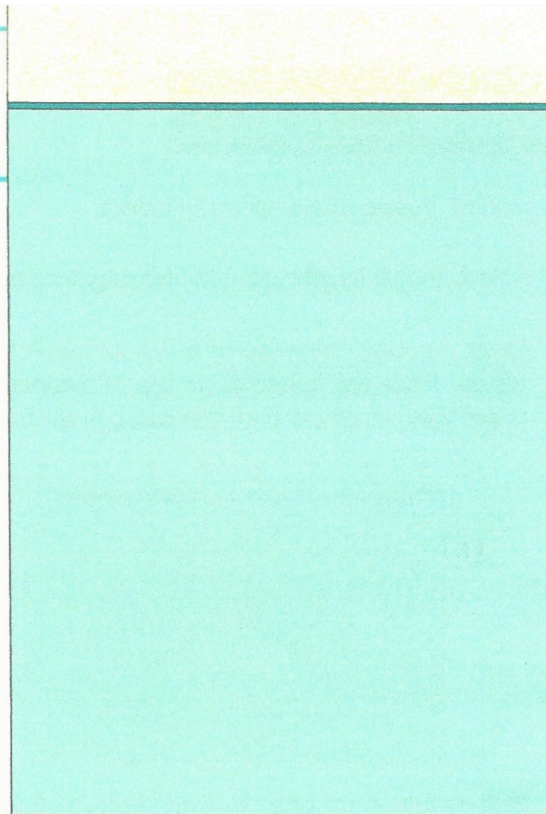
Pattern Basics

We encourage breaking the rules, but here are a few things you might want to keep in mind:

- Please read through **all** the instructions carefully **before** beginning a project. Every effort has been made to ensure the accuracy of this pattern.
- All instructions use a $\frac{1}{4}$ " seam allowance unless otherwise stated.
- All fabrics are sewn right sides together, unless otherwise stated.
- Need help with any of the techniques used? Check out our free tutorials and videos at www.connectingthreads.com/tutorials/quilting_tutorials.html

Common Quilting Acronyms:

FQ = fat quarter (18" x 22") WS = wrong side of fabric
WOFQ = width of fat quarter RS = right side of fabric
WOF = width of fabric HST = half square triangle
LOF = length of fabric QST = quarter square triangle



Standard Size Pillowcase

	A - Body of pillowcase
3/4 yd	
	B - Cuff
1/4 yd	
	C - Accent band 1-1/2" x WOF
1/4 yd	

Pattern changes by Cherri Hess

Body of Pillowcase

Standard Size 27" x WOF
Queen Size 31" x WOF
King Size 37" x WOF

Cuff size option, I like a larger cuff cut 11" or 12"

Accent band, I like 2" (could also be a ruffle or lace)

Directions changes

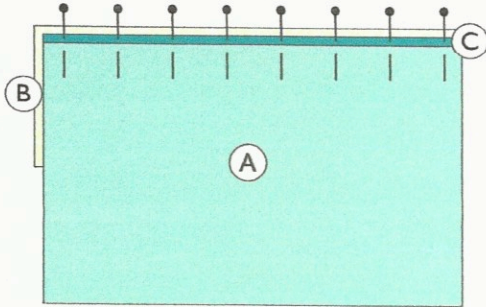
6. Sew using $\frac{1}{4}$ " seam allowance

9. Sew with less than $\frac{1}{4}$ " seam allowance

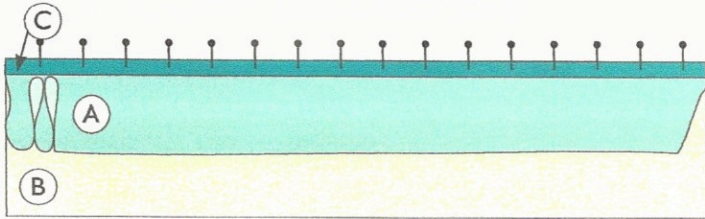
Start $\frac{1}{2}$ " from edge of cuff (reverse sew back $\frac{1}{2}$ " to top of cuff to keep your starting threads from hanging out), now continue sewing side and bottom of pillow case.

Directions!

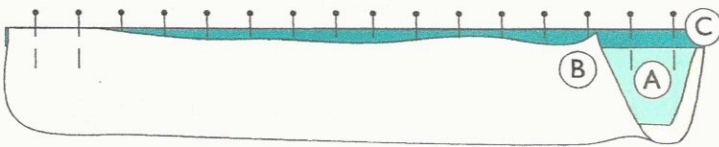
1. Iron all creases out of all three fabrics.
2. Fold **C** in half lengthwise with WS together and press.
3. Layer the long raw edge of **B** RS up. Lay **A** on top of **B** RS up. Place the folded **C** on top of this making sure all upper raw edges are flush. Pin through all three fabrics.



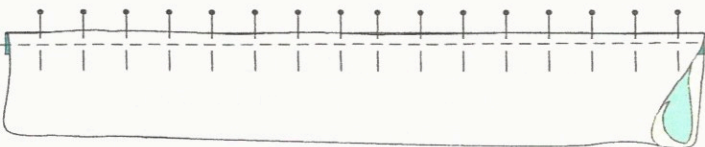
4. Roll or fold **A** up onto **B**. Avoid laying the fabric on the band.



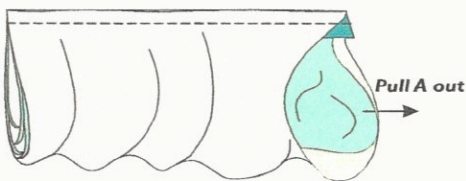
5. Bring **B** up to the raw edge so the folded (or rolled) **A** and **C** are tucked inside. Pin.



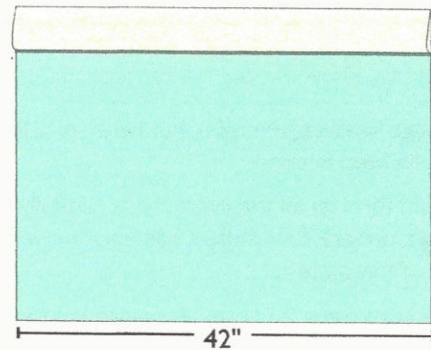
6. Sew along the raw edge using a 1/2" seam allowance.



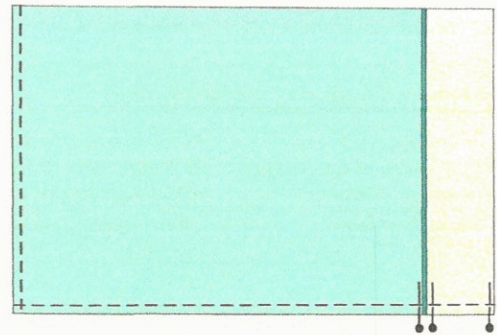
7. Once stitched, pull **A** out of the tube.



8. Fully open and press. Trim to remove selvages and even up sides (approximately 40" to 42").



9. Fold sewn pillowcase in half lengthwise with WS together. *Hint:* Pin the cuff area to make sure the seams are aligned; start sewing at the cuff. Sew 1/8" around perimeter raw edge only.



10. Turn WS out pushing the sewn edges out completely. *Hint:* It is helpful to use a semi-blunt tool for this job. A skewer or chopstick is excellent for this use. Press. Stitch sewn edges again with a 3/8" seam allowance.



11. Turn RS out pushing the sewn edges out completely. Press.

