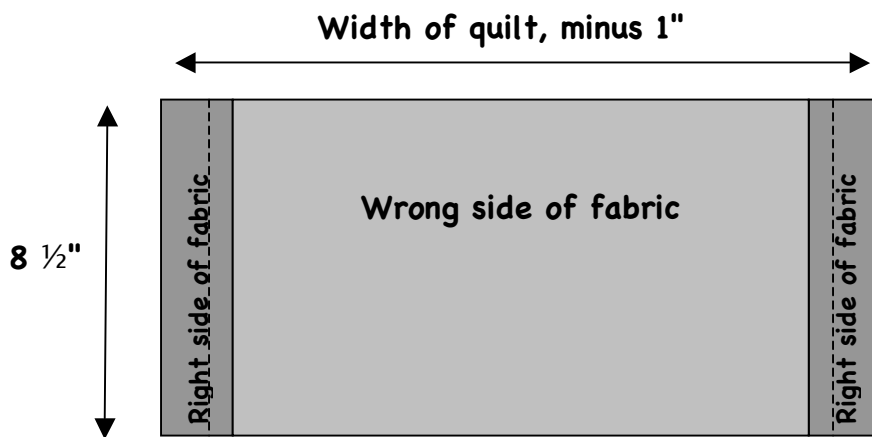


Quilt Sleeve Instructions

The quilt must have a 4 inch, finished, sleeve attached. If the quilt is an unusual shape or requires a unique mounting, the appropriate materials must be submitted with the quilt.

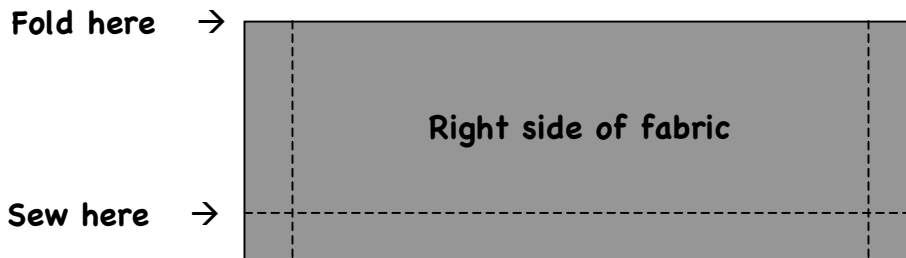
A sleeve may be prepared as follows:

1. Cut a strip of fabric $8\frac{1}{2}$ " wide and about 1" shorter than the width of the quilt (the side from which the quilt will be hung). The fabric can match your backing material, be of plain muslin, or be of some other fabric. Fold edge of each side over and hem.



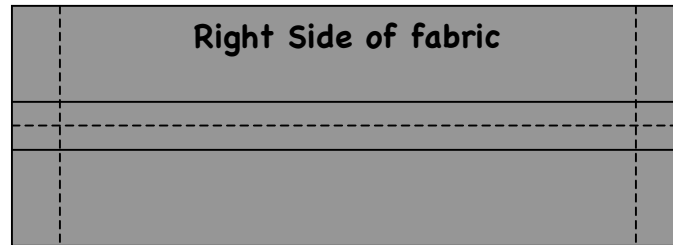
Step 1

2. Fold the fabric in half lengthwise with the *wrong* sides together and stitch a 1/4" seam, creating a tube.



Step 2

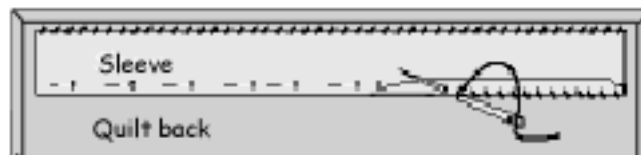
3. Press the seam open. The seam will be on the outside, but hidden against the back of the quilt. Lay the tube out flat so that the seam is centered between the top and bottom edges. Press a crease in the upper edge of the tube; do not press a crease in the lower edge of the tube.



Step 3

4. Position the upper edge of the tube just below the inner edge of the binding at the top of the quilt with the seam against the backing. Blindstitch the upper edge of the tube to the backing and the batting, making sure that the stitches do not go through to the front of the quilt.

5. Ease the side of the tube facing you towards the top of the quilt about 1/4" to 1/2". (Make sure that it does not go over the upper edge of the quilt.) The width of the tube that is against the quilt will be narrower than the width of the tube that is away from the quilt. This allows for the thickness of the hanging rod and prevents distortion and strain on the front of the quilt while it is hung.



Steps 4, 5 & 6

6. Blindstitch the lower edge of the tube to the backing and batting.